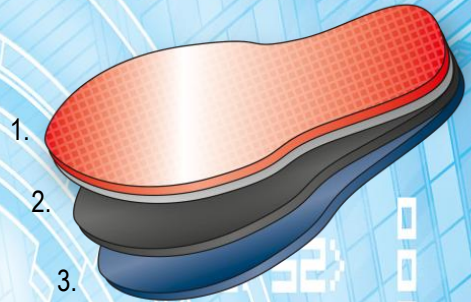




# Cut-to-size insole

CATEGORY: Children  
 SIZES: 22-40  
 SKU-NO. 7200  
 PU: 30 polybags in counter display



## MATERIALS

1. Gentle to the skin Coolmax® fibre
2. Odour-absorbing activated carbon
3. Breathable latex foam cushioning



## PRODUCT FEATURES

- Breathable and cooling COOLMAX® fibre
- Gentle to the skin
- Absorbs odour
- Cushions your feet while walking

## SALES ARGUMENTS

Gentle to the skin, with slight cooling effect and excellent ventilation qualities due to COOLMAX® fibre

Perforations in the latex keep the air moving inside the shoes

Shock-absorbing latex foam cushion layer

Extremely soft, comfy walking sensation

Cut to fit the shoes of your children

KOMFORT	●	●	○
FRISCHE	●	●	○
GRÖSSENAUSGLEICH	●	○	○
GERUCHSBINDEND	●	●	●